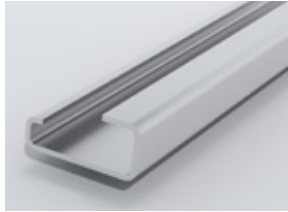


DIN Rails

MR 32



MR 35 x 7,5

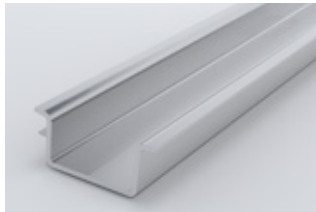


MR 35 x 7,5

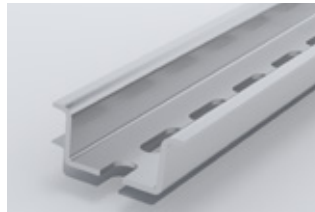


General Features				
Cat. No.	500 101	500 601	500 602	500 602E
Unit Length (m)	1	1	1	1
Description	Non-Slotted Zinc Coated Steel	Non-Slotted Zinc Coated Steel	Slotted Zinc Coated Steel	Slotted Galvanised Steel Sheet
Qty.	10	10	10	10
Cat. No.		500 603	500 604	500 604E
Unit Length (m)		2	2	2
Description		Non-Slotted Zinc Coated Steel	Slotted Galvanised Steel Sheet	Slotted Galvanised Steel Sheet
Qty.		10	10	10
Cat. No.		500 605		
Unit Length (m)		3		
Description		Non-Slotted		
Qty.		10		

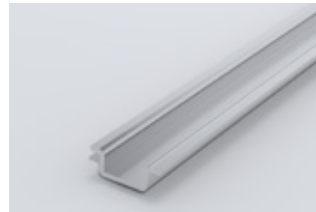
MR 35 x 15



MR 35 x 15



MR 15 x 5,5



MR 15 x 5,5



500 606	500 607	500 610	500 611
1	1	1	1
Non-Slotted / Zinc Coated Steel	Slotted / Zinc Coated Steel	Non-Slotted / Zinc Coated Steel	Slotted / Zinc Coated Steel
10	10	50	50
500 608	500 609	500 612	500 613
2	2	2	2
Non-Slotted / Zinc Coated Steel	Slotted / Zinc Coated Steel	Non-Slotted / Zinc Coated Steel	Slotted / Zinc Coated Steel
10	10	10	10

Cable Clamps



Cat. No.	Product	Max. Cable Tie Width (mm)	Dimensions (mm)	Qty.
510 110	K 1	8 - 12	19x51	25
510 120	K 2	11 - 18	22.5x50	25
510 130	K 3	12 - 23	28.5x55	25

Cable Clamp Rail



Cat. No.	Product	Dimensions (mm)	Qty.
510 500	KR 1	30x35	1

DIN Rail Support



RT

General Features	
Cat. No.	501 101
Qty.	25

Rail Cutting Tool

Cat. No.	Product	Cutting Thickness	Cutting Capacity	Length Adjustment	Qty.
500 650	KRKM	1,5 mm	7.5x35 mm 15x35 mm Tij Ø8mm	100 cm	1

- 3 different cutting slots
- Clean Cut
- Lossless cutting
- Non-blunting knife
- Length adjustment guide

